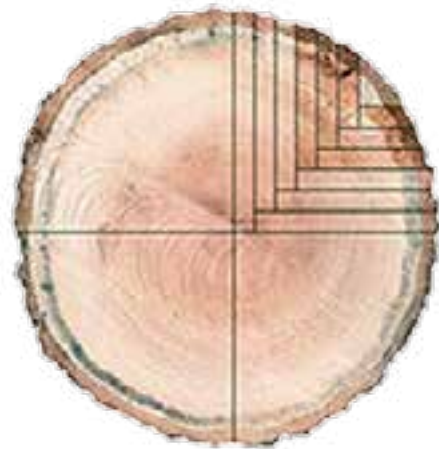


Riftsawn Flooring

How wood flooring is cut at the saw mill will affect its appearance and its performance. There are four cuts from which wood flooring is made: plainsawn, quartersawn, riftsawn, and livesawn.

Riftsawn lumber is produced by first quartering the log and then cutting from the center face and working out. The boards that are darker and closer to outside of the log represent riftsawn lumber. Because these boards come from the smaller part of the outside edges, riftsawing produces more waste, and fewer wide-width planks.



The face of the board has a vertical grain and minimal fleck effect. It produces a very consistent grain pattern.

The end grain of a riftsawn board has annual growth rings that are at 45 degrees to the surface. Riftsawn wood will expand and contract through the thickness of the board. This makes it more dimensionally stable than plainsawn wood.

More-detailed information about wood flooring saw cuts is available in the NWFA Wood Flooring Installation Guidelines and Methods publication, or at <http://member.nwfa.org/default.asp?page=InstallGuidelines>.